

# CRF News

VOLUME 2 | ISSUE 2

## GREETINGS!

It's been a very productive and fruitful fall semester! Students for the most part are involved, they're coming to church, and many are looking for ways to serve. We're very thankful for all that the Lord is doing in and through our student community. Here are some highlights:

### HOW TO BE A REAL SKEPTIC

In November CRF sponsored a talk by Dr. Mitch Stokes at the U of I. Dr. Stokes is a senior Fellow of Philosophy at New Saint Andrews College. He received his Ph. D. in Philosophy from the University of Notre Dame, studying under Dr. Alvin Plantinga. His topic for the campus lecture was How To Be A Real Skeptic. This talk was a challenge to atheists and doubters to apply their skepticism not to religion only, but to science as well. It amounted to an expose' on the limits of scientific knowledge. At the secular university where evolutionary theory is proclaimed as king, it actually doesn't take much to demonstrate that the emperor has no clothes. The meeting was well-attended and we're looking forward to continuing with an event like this every semester.

### HOW TO BE A REAL SKEPTIC



**WHEN:** MONDAY NOV 28, 7:30PM  
**WHERE:** UI COMMONS  
WHITEWATER/CLEARWATER  
**WHO:** DR. MITCH STOKES,  
PH.D. IN PHILOSOPHY,  
UNIVERSITY OF NOTRE DAME, 2005;  
SENIOR FELLOW OF PHILOSOPHY,  
NEW SAINT ANDREWS COLLEGE

Sponsored By Collegiate Reformed Fellowship



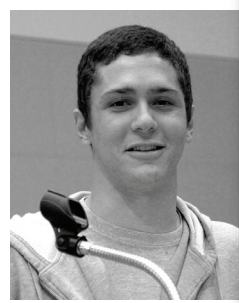
### SHEEPDOGS

The Sheepdogs have done a great job this semester. They have been my right-hand men. Without them not much would be happening...and I'd be in a rest home. They're leading 11 other guys Bible studies and they play a crucial part in our weekly meeting, service projects and outreach to non-believers. Several of them will be teaming up and starting a new Bible study in the dorms next semester. This is very strategic in that the dorms represent the ripest mission field on campus.



## WSU STUDY

For the first time in several years we have a Bible study over at WSU. This is ably led by our two WSU Sheepdogs, Tal Williams and Joe Morris. They have gathered a group of 8 to 10 guys and are working through the Strong Young Men Bible study series. Last week I crashed the party as the guest Bible study leader. What a great bunch of hungry, teachable guys! We're anticipating an increasing presence at WSU.



## CRF COLLEGE WOMEN

The college gals continue to have an amazing ministry among their peers and among others in the church community. Laurie and Deb Blakey are leading the gals through a book study on Philippians, training them to study God's Word and

equipping them to lead others. The gals are leading eight other studies and are actively involved in peer-to peer ministry. Another thing they've taken on is staffing a visitor's nursery at Christ Church.







## NEXT SEMESTER

We'll continue with many of the **ACTIVITIES** we began in the fall, but in addition we're planning an **EVANGELISTIC CAMPAIGN** aimed at the **WHOLE COMMUNITY**. The details are still coming together. We'll tell you more about it in the **NEXT ISSUE** of CRF News.

## CRF EXPANSION

For about a year now we've been laying the groundwork for expanding CRF to a regional and possibly even a national ministry. One of the first steps toward this end is the creation of a campus minister's training program here in Moscow. While there is still a lot of work to do, we think we've got some things in place which can give a prospective campus minister some quality training and experience. In November, Laurie and I traveled to Missoula,

Montana, to visit Christ Church, Missoula. I was invited to preach at their Sunday service and afterward give a presentation about the importance of campus ministry, its strategic nature and the opportunities for training in Moscow. The parallels between Moscow and Missoula are striking—major universities in small towns.



# LETTERS FROM YOU

Halfway through my freshman year, I was in a funk. Until I left for school, I had never been away from my family for more than a week, and I was coming up on four months of separation. Four months of glorious freedom: full of paying for my own bills, losing sleep trying to stay one step ahead of a tidal wave of homework, and feeling too overworked and out of place to develop any meaningful friendships. Christmas break was two weeks away, and I no longer really cared about grades and GPAs. I only wanted to get through and get home. I had just finished my first piece of homework for the evening and as I was driving home from Bucer's, I passed the 1912 Center and saw a large group of my classmates mingling with students I did not know. They were laughing, eating, and as I pulled up, standing to sing. Feeling curious and lonely, I parked and came in the rear door, trying to stay inconspicuous in the back of the group. I slowly realized that I had snuck into the annual Christmas party for CRF, the student organization that I had managed to avoid for the first half of the year. I enjoyed the last half an hour of the party and went home thinking that I had better show up for the first couple of weeks when I got back so no one would think I just came for the party.

So I came back. And kept coming back. I found that I was not only enjoying myself, but actually looking forward to Monday night. I slowly realized that CRF was doing something to me and for me that I couldn't have expected. It was sanctifying my week. It was not just a Bible study. It was an opportunity to participate with fellow believers my own age, to be presented with very practical lessons on how to live my life as a young Christian in a university setting. I grew up in a Christian home, so hearing the Gospel was not a new experience for me. However having the Gospel pointed at my life and current situation was exactly the type of care and accountability I needed.

If I had to claim one thing that I have enjoyed most about CRF, it is just being a part of a ministry on a secular campus. It's easy to say that Jesus is King in the comfort and safety of your own home, or surrounded by friends and fellow believers at church. It is a different thing altogether to have to pass signs and opinion polls posted by the LGBTQ alliance, or hear a guy brag about how smashed he got and who he took home the night before, on your way into CRF. Mostly CRF is our way of getting a foot in the door. That campus belongs to Christ, and eventually it will reflect that truth. CRF is just the first step.

Tyler Antkowiak



## THANKS!

Your prayers, support and encouragement are greatly appreciated!

**Matt Gray**

*Teaching elder & campus minister*